

INTRODUCTION

Follow this guide to replace a dead or worn-out battery in your HMD Pulse Pro smartphone.

Your phone's lithium-ion battery has a limited lifespan. If your phone dies quickly and doesn't hold a charge, it may be time to replace the battery.


If your battery is swollen, take appropriate precautions.

- tools needed

- 1 × SIM Card Eject Tool
- 1 × Opening Pick
- 1 × Cross-head Screwdriver
- 1 × Spudger

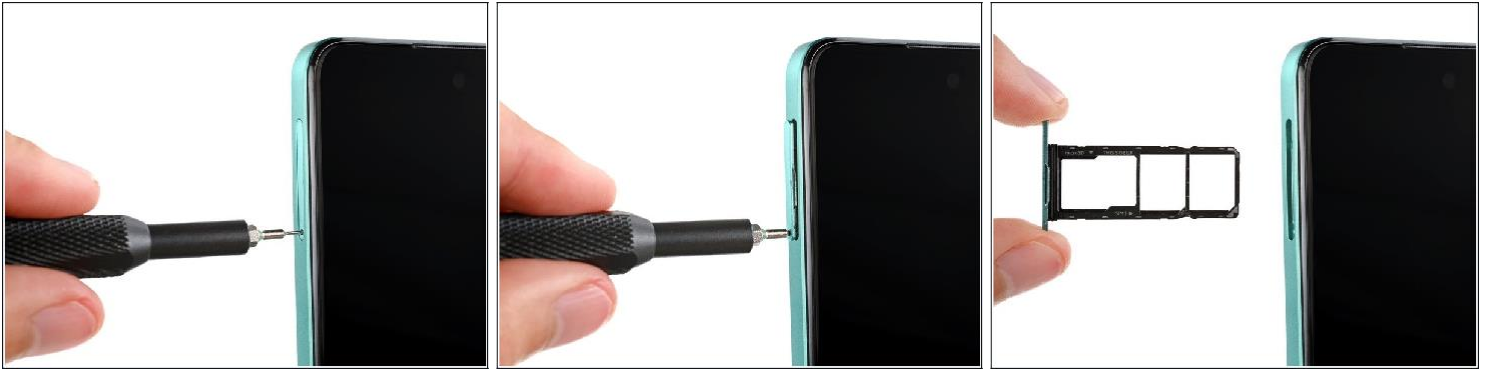
Step 1 — Prepare your phone for disassembly



 Let your phone's battery drain below 25% before starting this repair. A charged lithium-ion battery may catch fire if damaged.

- Unplug all cables from your phone and completely power it down.

Step 2 – Remove the SIM card tray



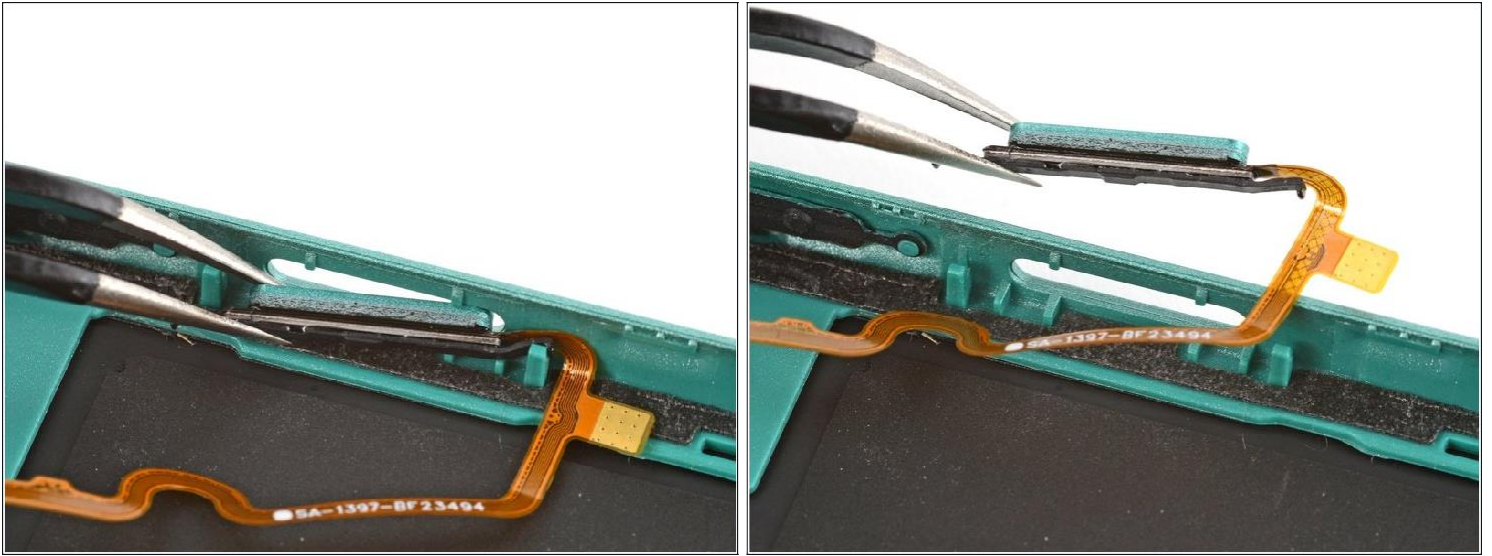
- Firmly press a SIM eject tool, bit, or straightened paper clip into the SIM card tray hole on the left edge of your phone until the tray ejects.
 - Remove the SIM card tray.
- During reassembly, use the tray's markings to orient and reinsert it properly.

Step 3 – Remove the power button



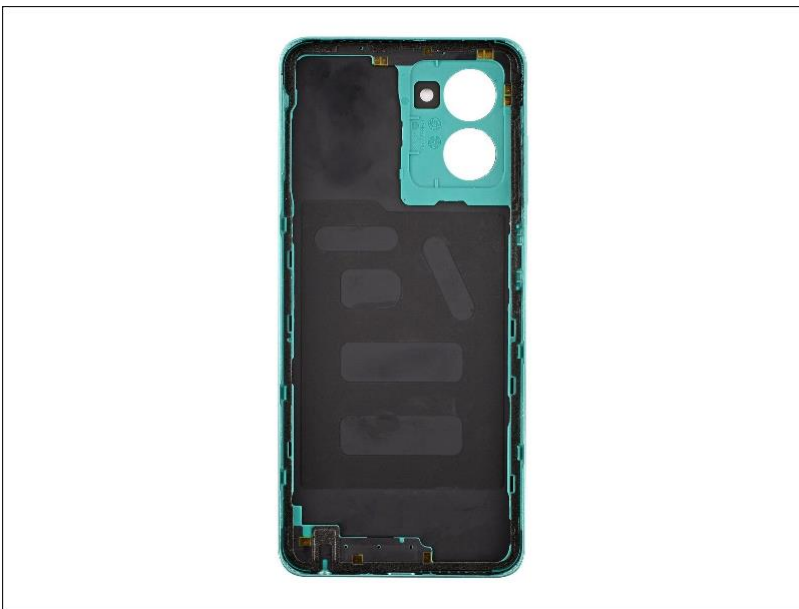
- i** If your replacement back cover doesn't come with a power button pre-installed, follow the next two steps to remove and transfer it.
- Use a pair of tweezers to *gently* grip the power button's top rubber arm and lift it out of its slot.

Step 4



- Use tweezers to lift and remove the power button.
- ☑ Installing the power button can be very tricky and may take a few tries. First, insert the bottom rubber arm and cable together into their slot and push the button into its cutout. Then, slide the upper arm into its slot.

Step 5



- You're left with the back cover.

Step 6 — Remove the battery



⚠ Be very careful not to bend, crease, or puncture the battery during the next few steps. A damaged battery can leak dangerous chemicals and catch fire.

- Use your fingers to carefully peel the three plastic tabs from the left side of the battery.

Step 7



- With one hand, fold the clear outer tabs out of the way of the battery and firmly hold them down to secure the frame.
 - ⓘ If you're having trouble with the tabs, you can fold them under the phone and tape them to the screen.
- With your free hand, grip the green center pull tab and pull straight up to fully separate the battery adhesive.
- Lay the battery over the right edge of your phone.

Step 8



- Use your fingers to peel the battery's plastic film from the frame.

Step 9



- Remove the battery and its film.

During reassembly:

⚠ Never reuse a deformed or damaged battery, as it's a potential safety hazard. Replace it with a new battery.

- If the adhesive in the battery recess is still sticky, you don't need to replace it.
- If the adhesive isn't sticky, use a spudger and tweezers to peel up and remove the two pieces of battery adhesive. Then, apply the new adhesive to the frame and remove the plastic liners.
- Firmly press the battery into its recess so the cable is on the top edge and the three tabs are on the left edge.

To reassemble your device, follow these instructions in reverse order.