

HMD Fusion Battery Replacement



INTRODUCTION

Use this guide to replace a dead or worn-out battery in your HMD Fusion phone.

Your phone's lithium-ion battery has a limited lifespan. If your phone dies quickly and doesn't hold a charge, it may be time to replace the battery.

If your battery is swollen, take appropriate precautions.

TOOLS:

SIM Care Eject Tool (1) T3

Torx Screwdriver (1)


Opening Picks(1)

Spudger (1)

Angled Tweezers (1)

Step 1 – Prepare your phone for disassembly



 Let your phone's battery drain below 25% before starting this repair. A charged lithium-ion battery may catch fire if damaged.

- Unplug all cables from your phone and completely power it down.

Step 2 – Remove the SIM card tray



- Firmly press a SIM eject tool into the SIM card tray hole on the left edge of your phone until the tray ejects.
- Remove the SIM card tray.

Step 3 – Remove the back cover screws



- Use a T3 Torx screwdriver to remove the sixteen 5.0 mm-long screws securing the back cover.
- Use your fingernails, or angled tweezers, to remove any stuck screws.
 - ⓘ The screws are secured tightly in the back cover so please remove them gently. Move to the next step and follow the guide normally.

Step 4

- ✦ During the next four steps, the remaining back cover screws might fall out unexpectedly.
- ✦ To avoid losing screws, you can place a tray or bowl under the phone while you work.

Step 5 – Unclip the back cover



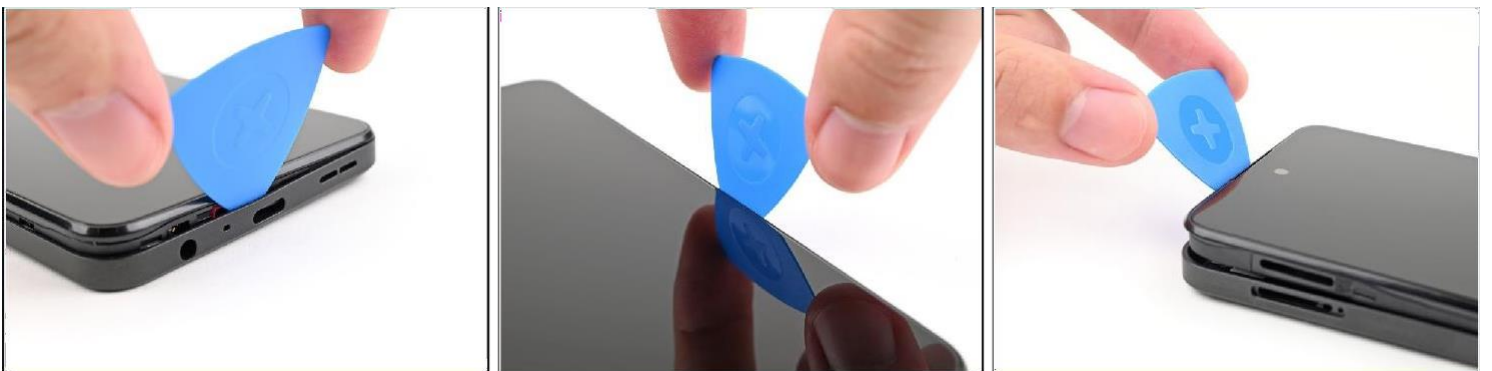
- Flip your phone over so the screen is facing up.
- Insert the tip of an opening pick between the back cover and frame at the SIM card tray cutout.

Step 6



- Slide the opening pick along the left edge to begin unclipping the back cover.

Step 7



- Continue sliding the pick around the perimeter of your phone until the back cover is fully unclipped.
 - ⓘ The corners can be tricky to unclip and may take some force. If you're having trouble, try prying up with the pick.

⚠ Don't try to fully remove the cover yet, as it's still connected by a delicate cable.

Snap -1



- Carefully flip your phone over so the back cover is facing up.
- Lift the back cover off the frame and flip it over the left edge of your phone, laying the cover flat on your work surface.
- ⚠ Be very careful not to strain the back cover's delicate cable.
- ☑ During reassembly, place the back cover onto the frame and firmly press around the perimeter to reengage all the clips.

Step 9 – Disconnect the battery

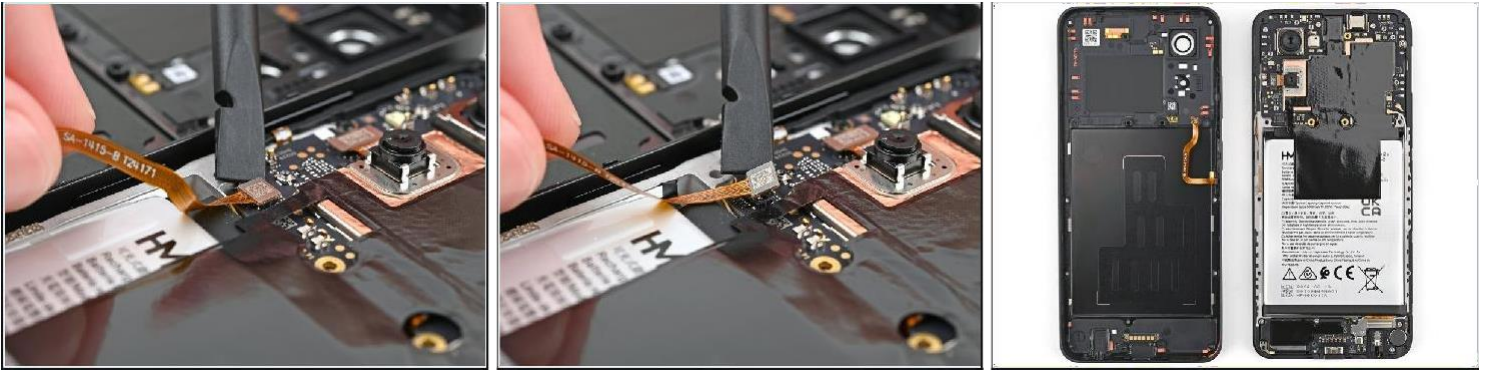


- Use a spudger to pry up and disconnect the battery press connector (Refer Snap -1 on next Page).

Snap -1



Step 10 – Disconnect the power button



- Use a spudger to pry up and disconnect the power button press connector.
- Remove the back cover.

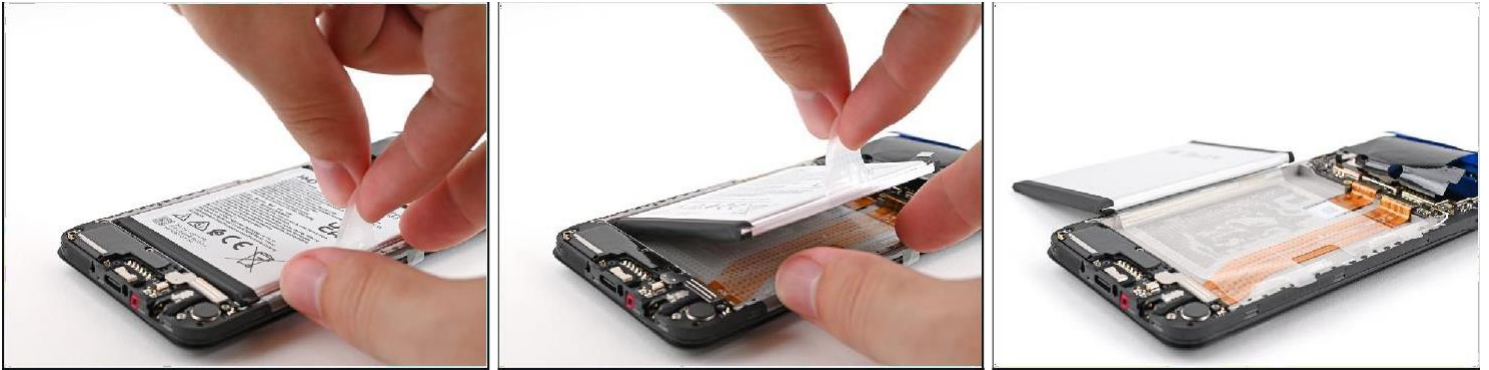
Step 11 – Remove the battery



⚠ Be very careful not to bend, crease, or puncture the battery during the next few steps. A damaged battery can leak dangerous chemicals and catch fire.

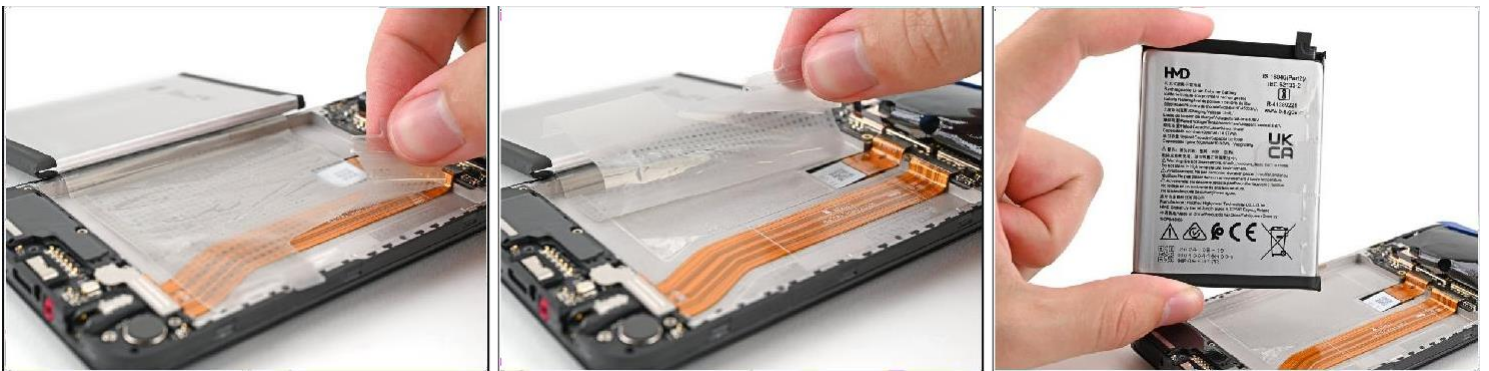
- Use your fingers to carefully peel the three plastic tabs from the right side of the battery.

Snap -2



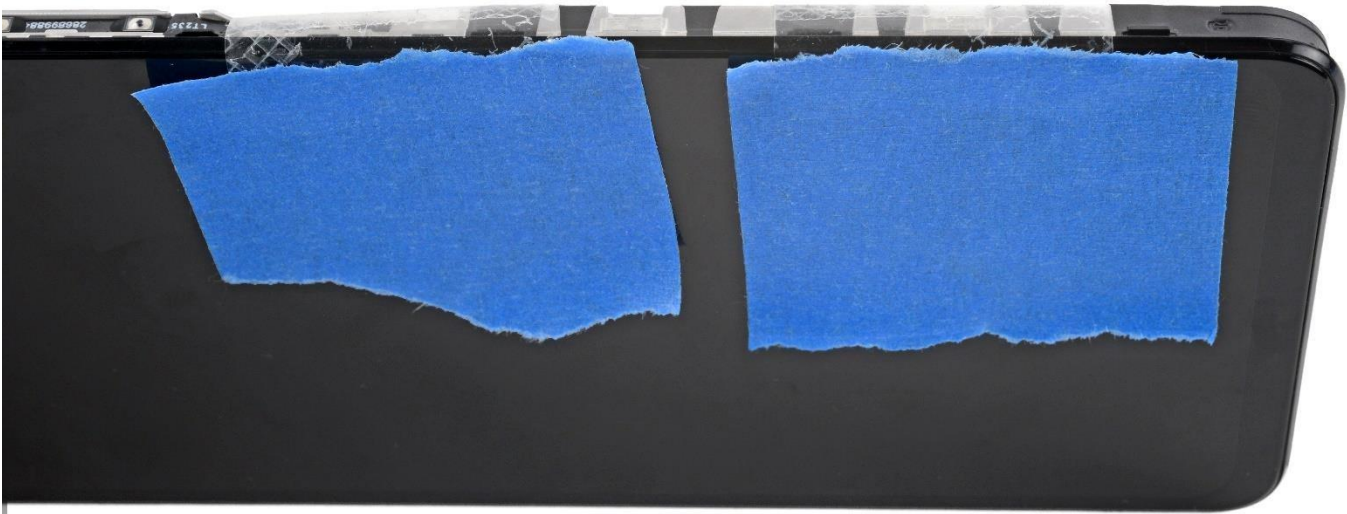
- With one hand, fold the two outer tabs out of the way of the battery and firmly hold them down to secure the frame.
 - ⓘ If you're having trouble with the tabs, you can fold them under the phone and tape them on the screen. (Refer Snap-2 on next Page)
- With your free hand, grip the center pull tab and pull straight up to fully separate the battery adhesive.
- Lay the battery over the left edge of your phone.

Step 13

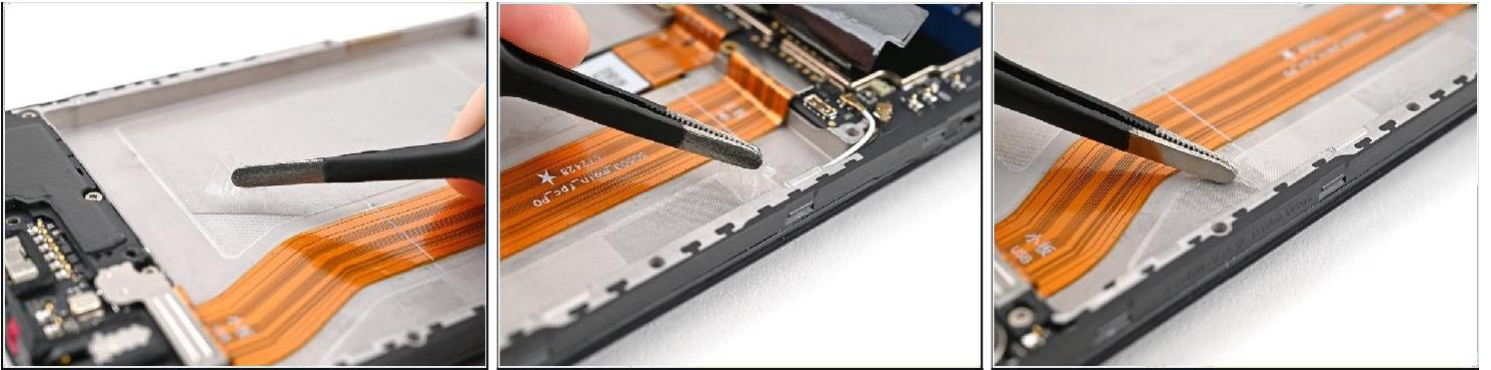


- Use your fingers to peel the battery's plastic film from the frame.
- Remove the battery and its film.

Snap -2



Step 14 – Remove the battery adhesive



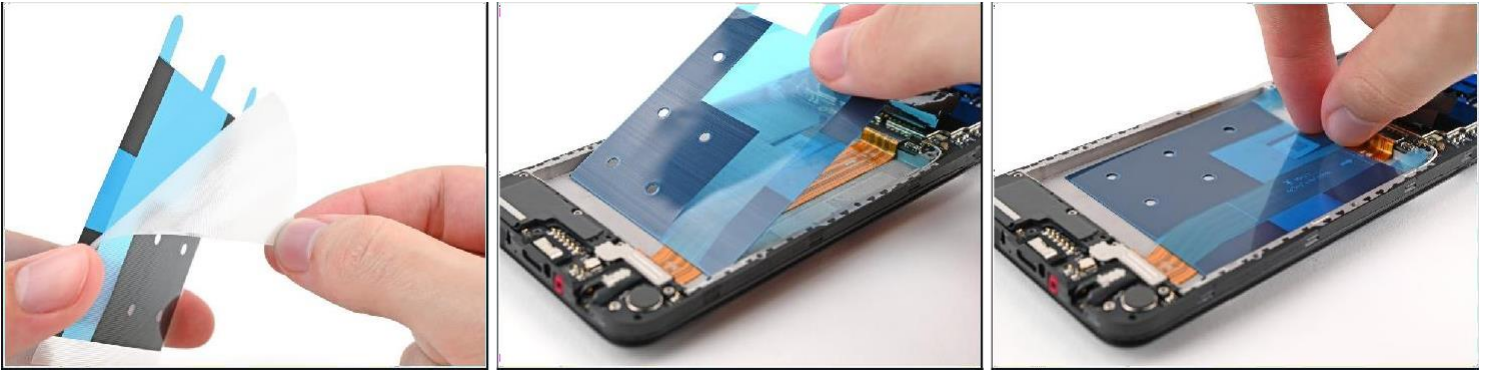
- Use tweezers, or your fingers, to peel the three battery adhesive strips off the frame.

Step 15 – Apply the new battery adhesive



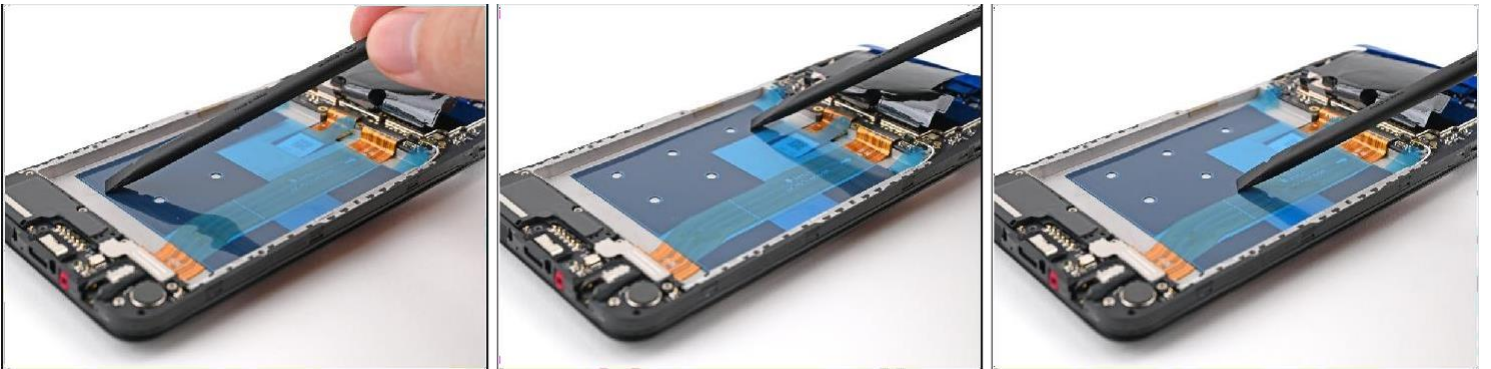
- Align the new battery adhesive over the frame, making sure that the three adhesive strips overlap properly.

Step 16



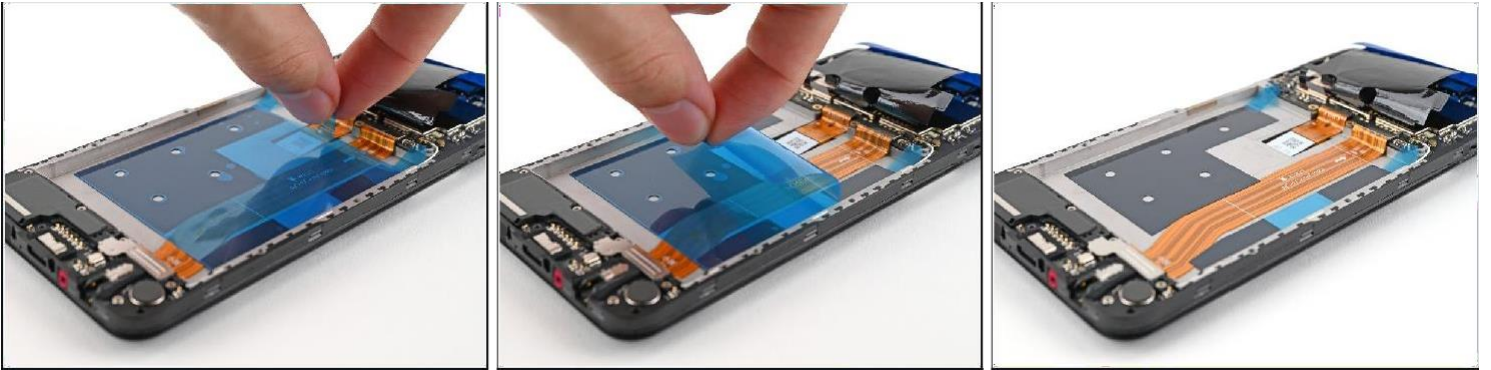
- Peel off the clear liner from the new battery adhesive.
- Align an edge of the adhesive with the textured surface on the frame and press it down flat.

Step 17



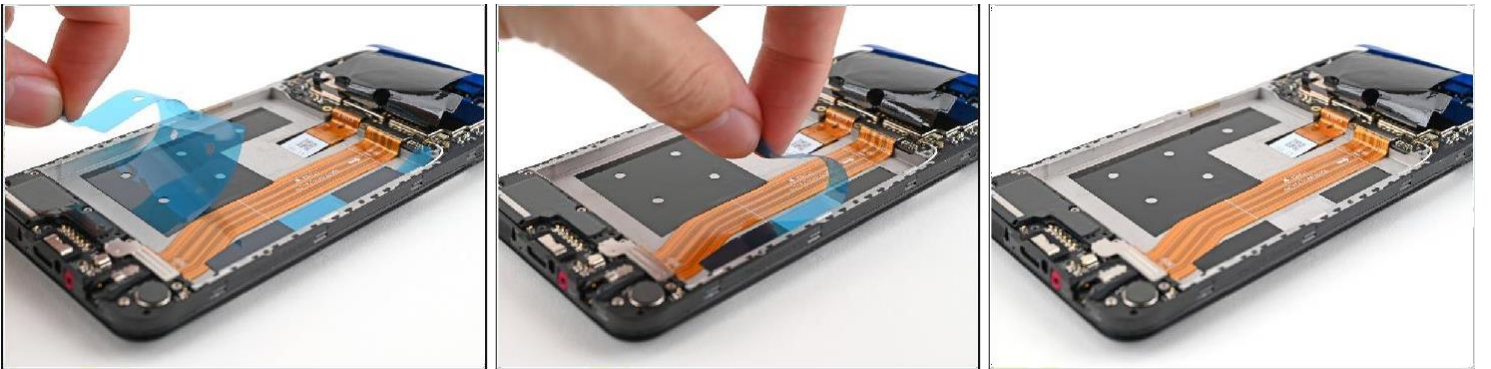
- Use the flat end of a spudger or your fingers to press the adhesive onto the frame.

Step 18



- Grip the middle pull tab on the larger blue liner and peel it off the adhesive.
 - ⓘ You have to remove this liner first, as it sits on top of the other two liners.

Step 19



- Remove the two remaining liners to expose the adhesive.



- While holding the battery over its recess, temporarily reconnect the battery connector.
- Lay the battery into its recess.

Step 21



- Firmly press the battery into its recess to secure it with the adhesive.