

HMD Pulse Pro Charging Board Replacement



INTRODUCTION

Follow this guide to replace the charging board in your HMD Pulse Pro smartphone.

The charging board includes the USB-C port and headphone jack. To replace either of the ports, you must replace the entire board.

If you're having issues charging your phone, connecting headphones via the 3.5 mm jack, or if either port is loose, it may be time to replace the charging board.

tools needed

- SIM Card Eject Tool
- Opening Pick
- Cross-head Screwdriver
- Spudger
- Tweezers

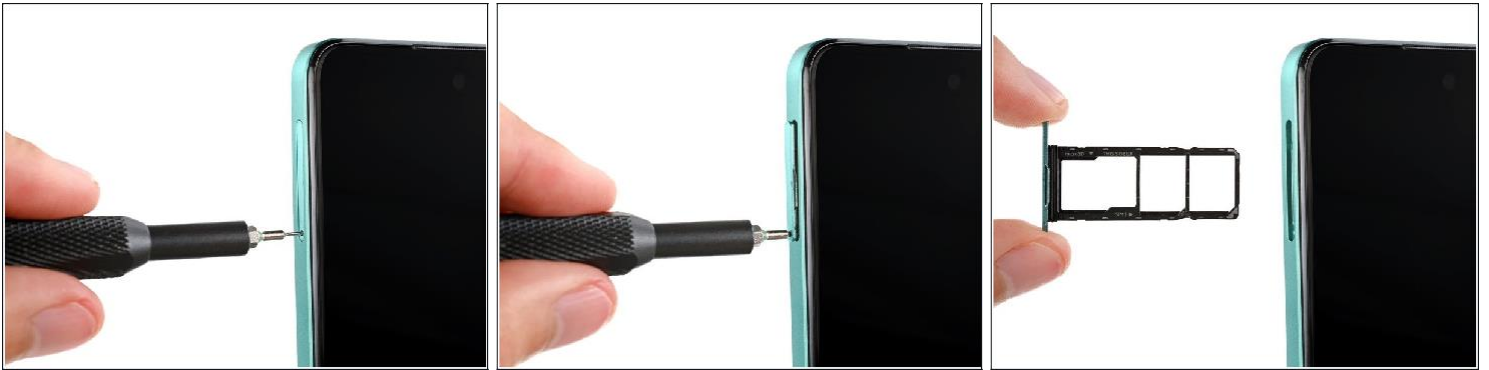
Step 1 – Prepare your phone for disassembly



⚠️ Let your phone's battery drain below 25% before starting this repair. A charged lithium-ion battery may catch fire if damaged.

- Unplug all cables from your phone and completely power it down.

Step 2 – Remove the SIM card tray



- Firmly press a SIM eject tool, bit, or straightened paper clip into the SIM card tray hole on the left edge of your phone until the tray ejects.
- Remove the SIM card tray.
- During reassembly, use the tray's markings to orient and reinsert it properly.

Step 3 – Separate the back cover



- Insert the tip of an opening pick between the back cover and frame, at the SIM card tray cutout.

Step 4



- Position the opening pick straight down and slide it along the left edge to begin unclipping the back cover.

Step 5



- Continue sliding the pick around the perimeter of your phone until the back cover is fully unclipped.
 - ⓘ The corners can be tricky to unclip and may take some force. If you're having trouble, try prying up with the pick.

⚠ Don't try to fully remove the cover yet, as a delicate cable still connects it to your phone.

Step 6



- Carefully flip your phone over so the back cover is facing up.
- Lift the back cover off the frame and flip it over the left edge of your phone, laying the cover flat on your work surface.
⚠ Be very careful not to strain the back cover's delicate cable.
- ☑ During reassembly, place the back cover onto the frame and firmly squeeze around the perimeter to reengage all the clips.

Step 7 — Remove the motherboard cover



⚠ Be very careful not to puncture the battery with your Cross-head screwdriver.

- Use a Cross-head screwdriver to remove the nine 3.6 mm-long screws securing the motherboard cover.
- ⓘ The screw near the center of the top edge is covered by a sticker. Pierce through it with your Cross-head screwdriver, or use tweezers to remove it.

Step 8



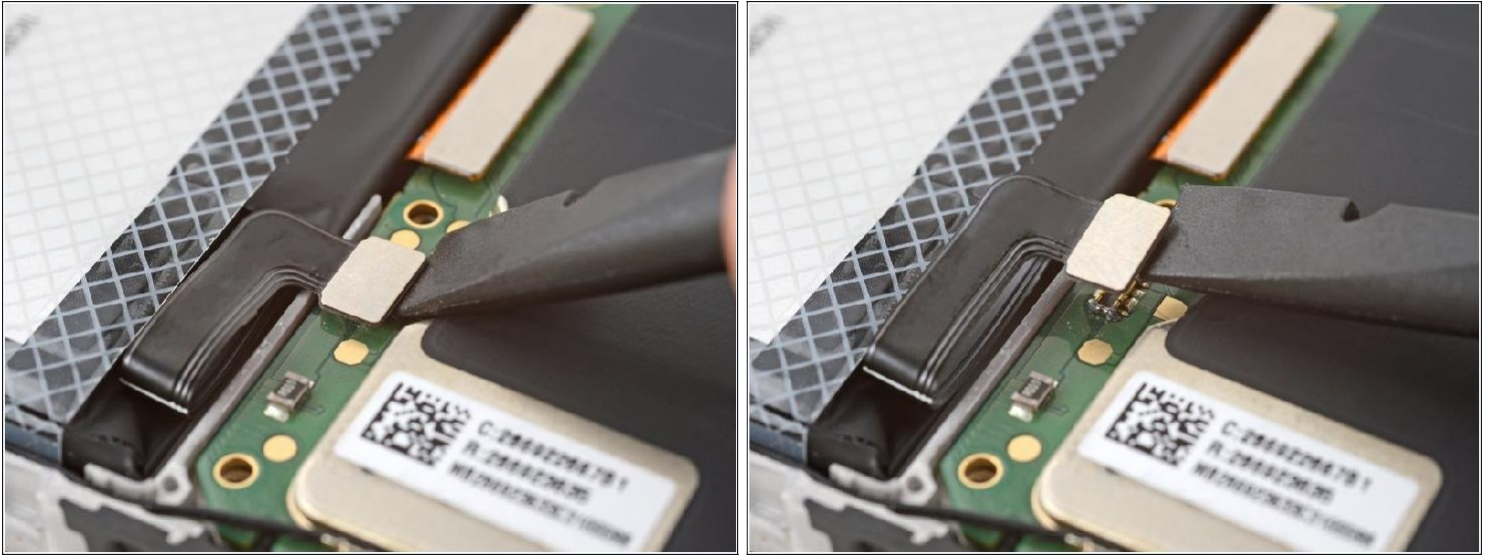
- Insert an opening pick between the right edge of the motherboard cover and frame. Twist the pick to fully unclip the cover.

Step 9



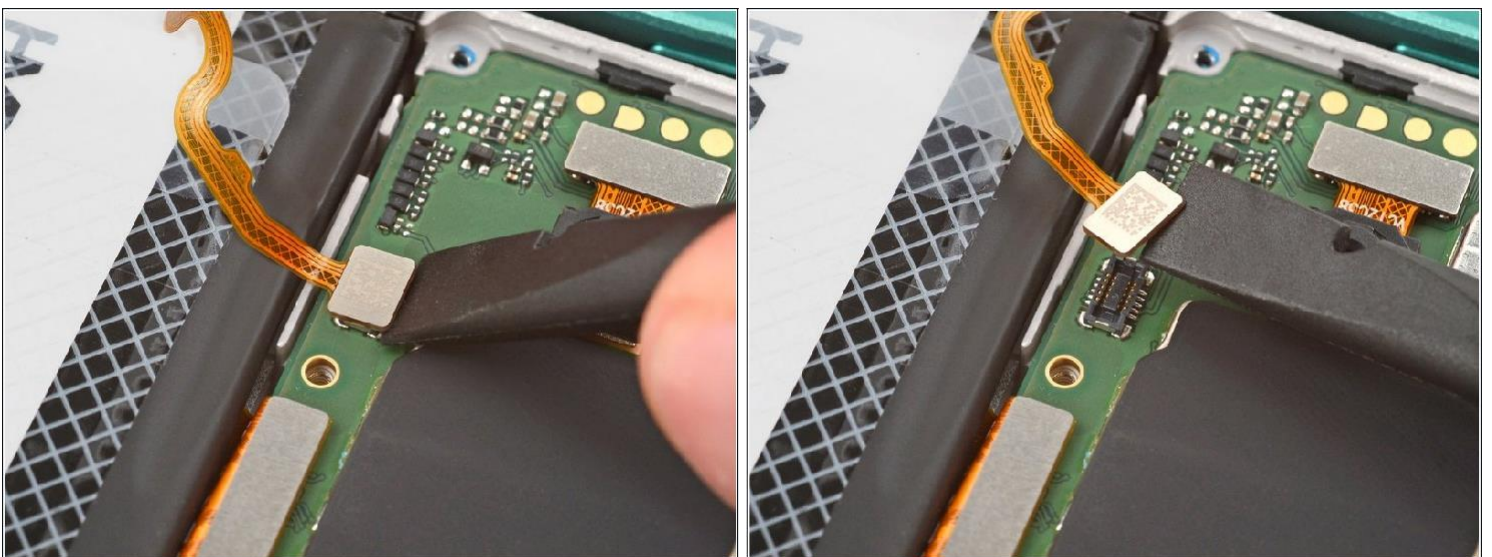
- Remove the motherboard shield and its connected graphite sheet.
- During reassembly, set the motherboard shield into place and press down firmly around the perimeter to reengage the clips.

Step 10 – Disconnect the battery



- Use the flat end of a spudger to pry up and disconnect the battery press connector from the bottom edge of the motherboard.
- ⓘ To reconnect these type of connectors, align the connector over its socket and press down with your fingertip—first at one side, then the other—until it clicks into place. Don't try to force the connector into place, or you may permanently damage it.

Step 11 – Remove the back cover



- Use the flat end of a spudger to pry up and disconnect the back cover press connector from the bottom edge of the motherboard.

Step 12



- Remove the back cover.

Step 13 – Remove the charging board cover



⚠ Be very careful not to puncture the battery with your Cross-head screwdriver.

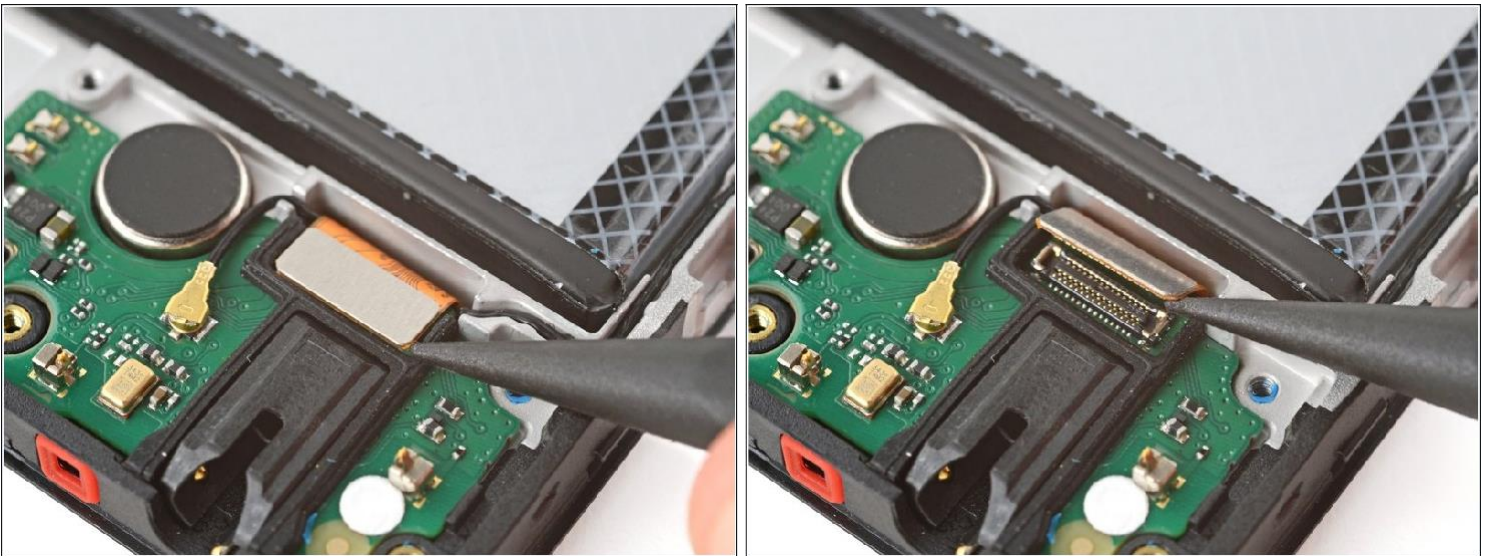
- Use a Cross-head screwdriver to remove the seven 3.6 mm-long screws securing the charging board cover.
- ⓘ The screw near the center of the bottom edge is covered by a sticker. Pierce through it with your Cross-head screwdriver, or use tweezers to remove it.

Step 14



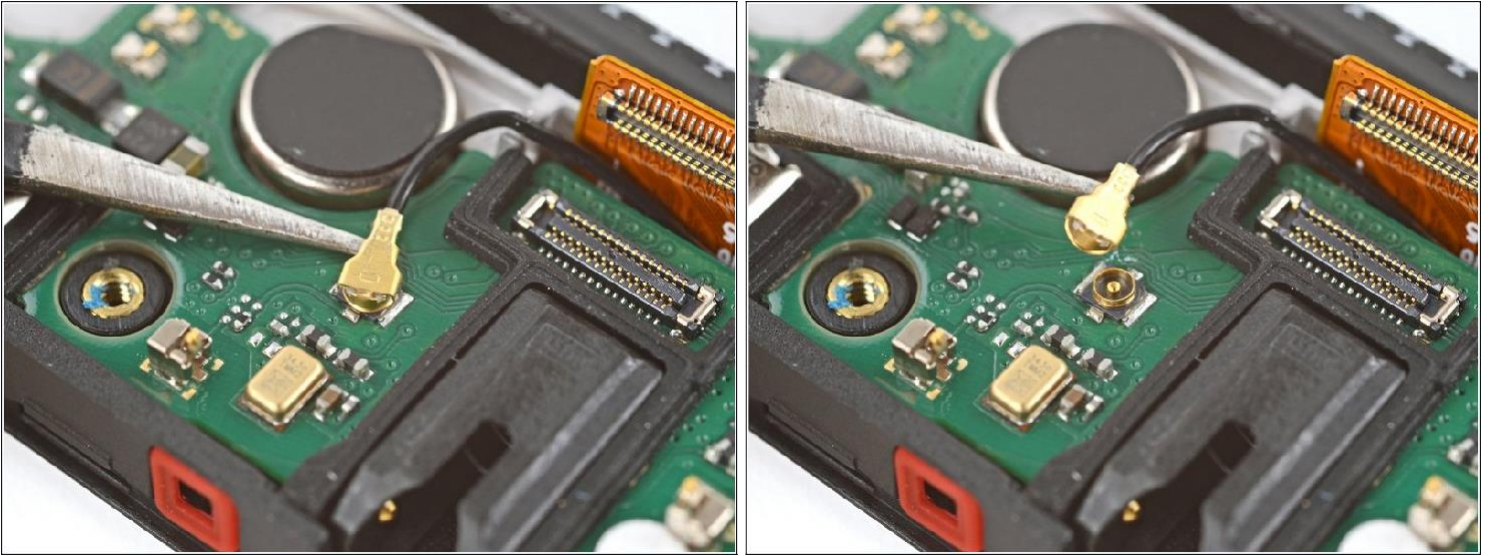
- Use your fingers to lift the bottom edge of the charging board cover until it unclips.
- Remove the cover.

Step 15 – Disconnect the charging board



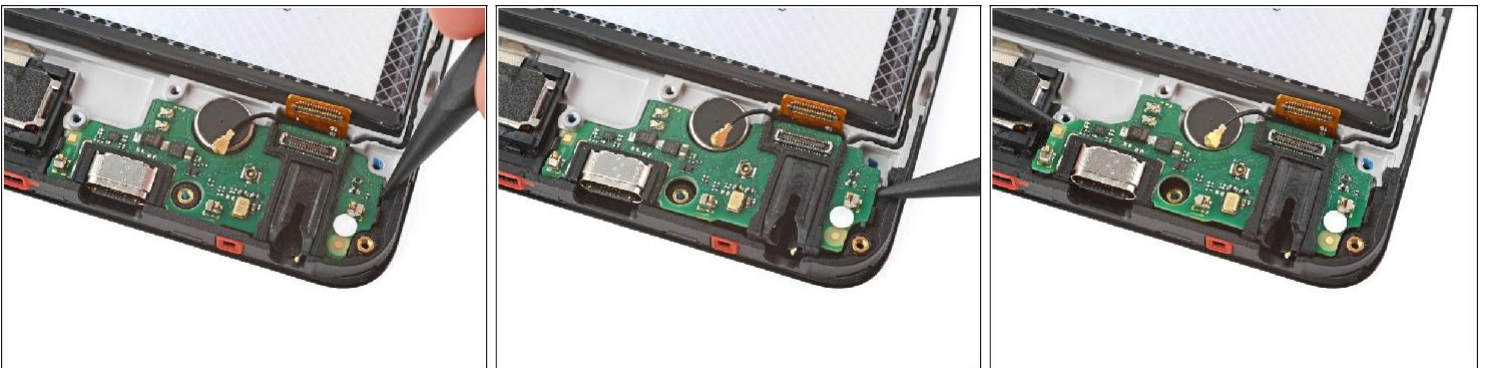
- Use the point of a spudger to pry up and disconnect the charging board cable press connector on the top edge of the board.

Step 16



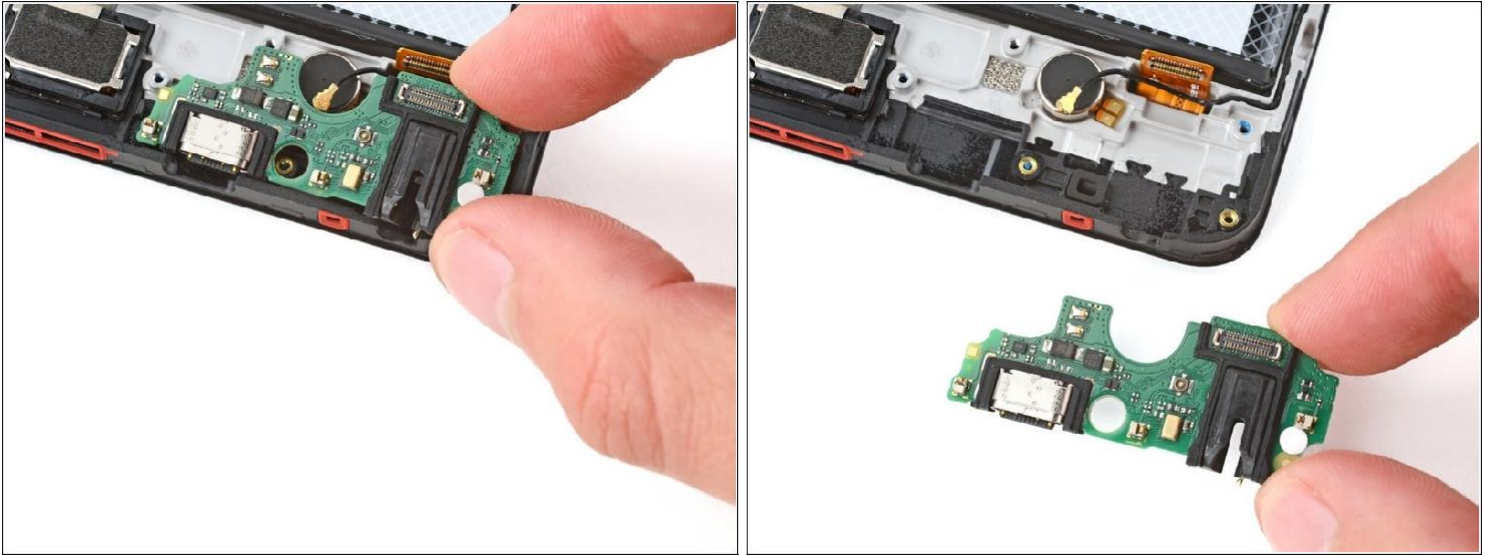
- Slide one arm of a pair of tweezers under the metal neck of the black antenna cable's connector head, near the center of the board.
 - Lift straight up to disconnect the cable.
- i** To reconnect the cable, hold the metal head over its socket and press down with the flat end of a spudger—it should snap into place. If it's not connecting, reposition the head and try again.

Step 17



- Use the point of a spudger to pry up and unclip the left and right edges of the charging board.

Step 18 – Remove the charging board



- Remove the charging board.
- During reassembly:
 - Make sure the interconnect cable is flipped up and the black antenna cable is routed through its groove on the right edge.
 - Set the charging board into its recess and press down on the edges to clip it into place.

To reassemble your device, follow these instructions in reverse order.