

HMD Skyline Screen Replacement

Follow this guide to replace a broken or cracked



INTRODUCTION

Follow this guide to replace a broken, cracked, or non-responsive screen on your HMDSkyline smartphone.

TOOLS:

SIM Card Eject Tool

T3 Torx


Screwdriver

Opening Pick

Spudger

Step 1 — Prepare your phone for disassembly



 Let your phone's battery drain below 25% before starting this repair. A charged lithium-ion battery may catch fire if damaged.

- Unplug all cables and completely power off your phone.

Step 2 — Separate the back cover



- ⓘ A screw-driven camshaft in the bottom left corner pushes the back cover away from the phone, creating a gap to begin separating the cover.
- With the back cover facing up, use a T3 Torx screwdriver to turn the screw in the bottom edge *counterclockwise* until the back cover pops up.

Step 3



- ⓘ Before separating the back cover, note the following:
 - There's a seam just under the back cover panel. Don't insert your tool here.
 - Insert your tool completely under the back cover, so it's between the frame and the underside of the back cover.
- Insert an opening pick under the bottom left corner of the back cover and slide it along the bottom edge to release the clips and separate the adhesive.

ⓘ You should feel and hear the back cover clips release. If you don't, insert the pickdeeper and try again.

Step 4



- Continue sliding the pick under the perimeter of the back cover to fully separate the clips and adhesive.

Step 5 — Remove the back cover

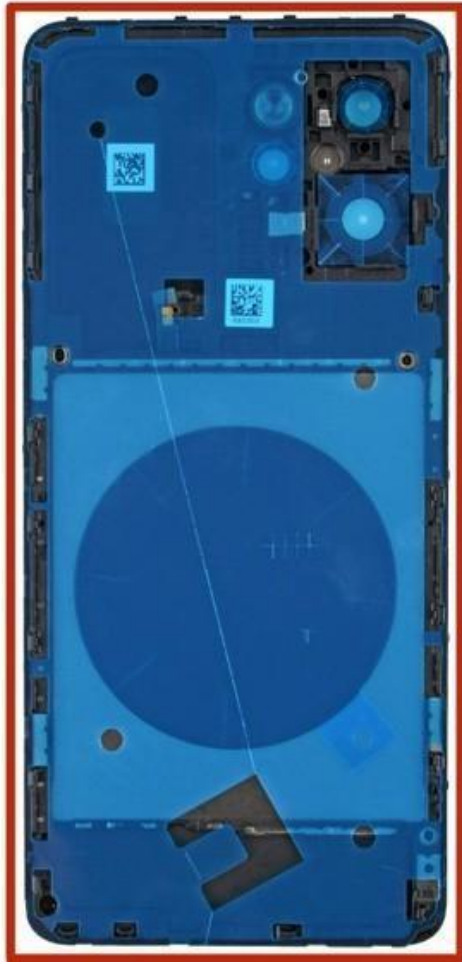


- Lift and remove the back cover.
- i** During reassembly:
 - Now is a good time to test your phone before sealing it up. Power it on and check that it works. Power it back down before you continue reassembly.
 - i** If you're installing a new back cover:
 - Make sure you remove all liners from the underside. (Refer to Snap 1 on the next page.)
 - Use the flat end of a spudger to press the small cable above the wireless charging coil into place over its alignment posts. (Refer to Snap 2 on the next

page.)

- Place the back cover onto the frame and firmly squeeze around the perimeter to engage all the clips.

Snap 1



Snap 2



Step 6 — Remove the screen screws



- Use a T3 Torx screwdriver to remove the thirteen 4.9 mm-long screws securing the screen to the frame.
- ⓘ These screws will be a different color or slightly different shade than the rest.

Step 7



- *Gently* flip the graphite sheet on the battery over the top edge of your phone.
- ⚠ Be careful not to tear the sheet, as it's very delicate.

Step 8 — Disconnect the battery



- Insert the point of a spudger in the notch on the left edge of the battery connector cover and pry up to release its clips.
 - ⓘ Only insert your tool enough to pry up the cover. Otherwise, you may accidentally disconnect the rear camera press connector. (Refer to Snap 3 on the next page.)
- Remove the cover.
- ☑ During reassembly, firmly press the cover into place to engage the clips.

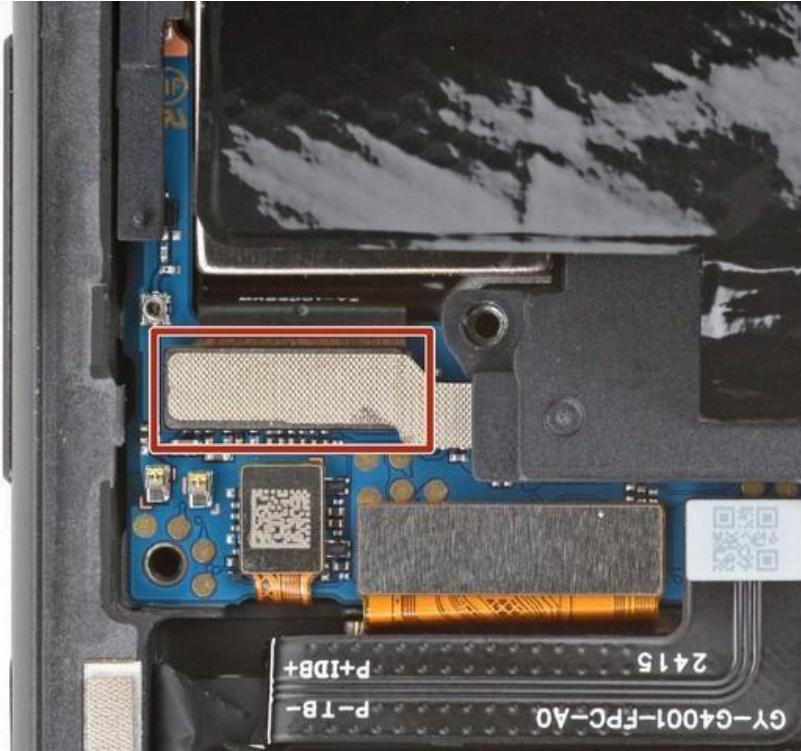
Step 9



- Insert the tip of an opening pick under the top edge of the battery press connector and pry up to disconnect it.
- Check if the rear camera press connector got disconnected during the previous step. If it did, reconnect it.

① To reconnect a press connector, align it over the socket and gently press down on one side until it clicks into place, then press down on the other side. It might take a few tries to align the connector.

Snap 3



Step 10 — Disconnect the screen



- Use your fingers to grip a bottom corner of the metal screen-connector cover.
 - Lift the bottom edge of the cover and pull it towards the bottom of your phone to tear the "seal" sticker and remove the cover.
- During reassembly, slide the tabs on the top edge of the cover under the motherboard cover and use the cutouts near the screw holes to align the cover. (Refer to Snap 4 on the next page.)

Step 11



- Insert the flat end of a spudger under the top edge of the screen cable press connector and pry up to disconnect it.

Snap 4



Step 12 — Remove the screen



- Use one hand to grip the bottom corners of the frame and lift your phone slightly off of your work surface (about 1/2 an inch or roughly 15 mm).
 - ⓘ Make sure you're only gripping the frame, and not the screen and frame together. Otherwise, the screen won't be able to separate.
- With your free hand, use a SIM eject tool (or something of similar size, like a bent paperclip) to *gently* push down on the screen through the cutout in the bottom corner of the frame. This should separate the screen, causing it to fall onto your work surface. (Refer to Snap 5 on the next page.)
- Guide the screen cable through its cutout and lift the frame off the
- screen. Set the frame down on a clean surface so the cameras are facing up.

Snap5



Step 13 — Reassembly information



During reassembly:

- Remove any tape or liners from the back of the screen—check the screen cable and front facing camera cutout. (Refer to Snap 6 on the next page.)
 - Hold the frame in one hand and your replacement screen in the other.
 - Thread the screen cable through its cutout on the *front* of the frame and press the screen into place so it's flush in the frame. (Refer to Snap 7 on the next page.)
 - Lay your phone screen side down on a soft cloth, making sure the screen doesn't detach from the frame.
 - Simultaneously press down on all four corners of your phone to fully seat the screen in the frame.
 - Use a T3 Torx screwdriver to install four screen screws in the corners of the frame—this ensures that the screen doesn't detach from the frame during reassembly.
- (i)** If the screws aren't catching, double-check that the screen is fully seated.

To reassemble your device, follow these instructions in reverse order, starting with step 11.

Snap 6



Snap 7

